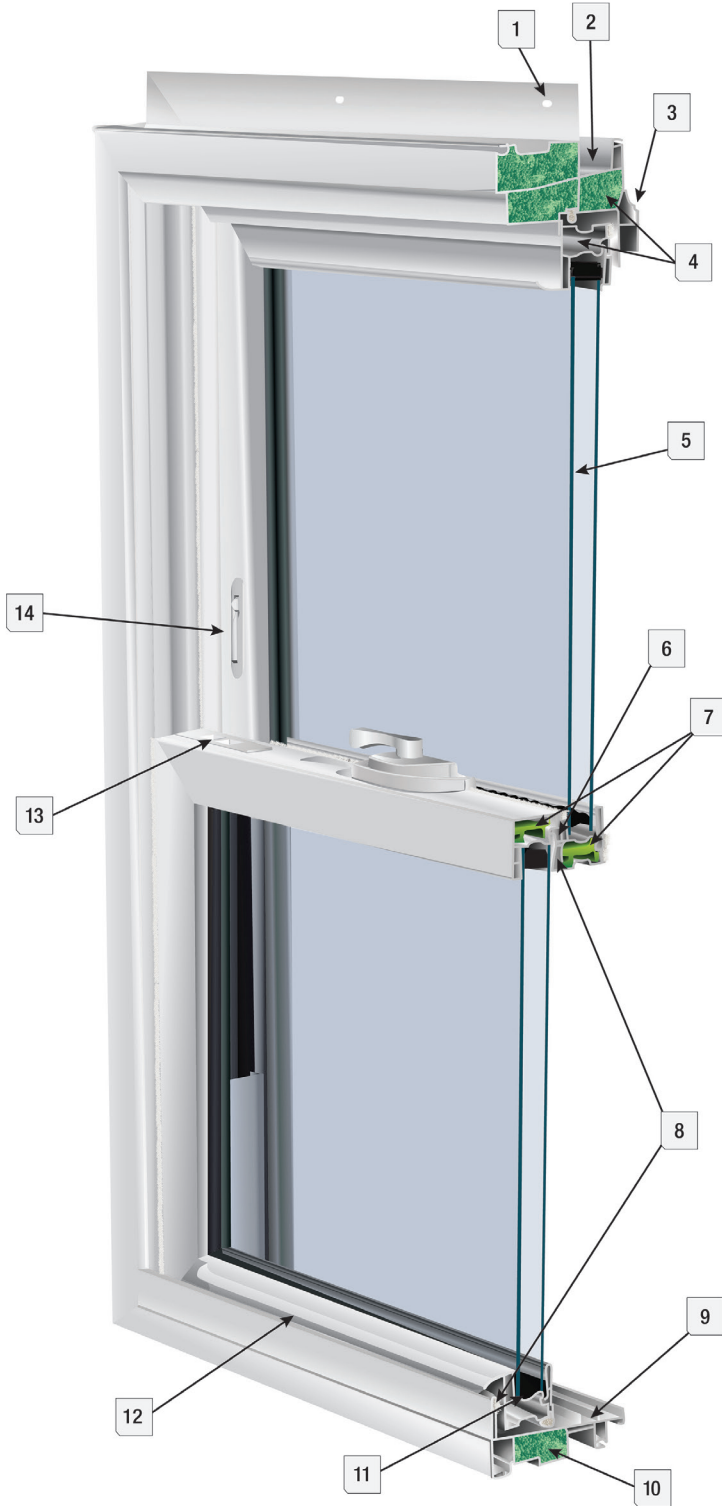


7200 SERIES

New Construction Double Hung

DOUBLE HUNG | HORIZONTAL SLIDER
FIXED PICTURE | SPECIALTY SHAPES

The 7200 Series is a reliable vinyl window design that combines quality and affordability with many optional features making it our most desired custom product.



FEATURES

- 1 Extruded Nail Fin (removable for replacement applications)
- 2 Fully Extruded Recessed J-Channel
- 3 Beveled Exterior Main-Frame
- 4 Multi-Chambered Sashes and Main-Frame
- 5 3/4" Insulated Double Strength Glass Unit
- 6 Fully Extruded Interlock at Sash Locking Rail
- 7 Reinforced Innergy™ Rigid Thermal Interlock System Available
- 8 Multi-Point Double Barrier-Fin Weather Stripping System Along Sashes and Main-Frame
- 9 Sloped Sill Design
- 10 Foam-Filled Frame Available
- 11 Quanex Building Products Most Advanced Warm Edge Spacer Duralite®
- 12 Fully Extruded Lift Rail
- 13 E-Z Tilt™ Sash Design with Routed Flush Mount Dual Tilt Latches
- 14 Twin Vent Stops
- 15 Triple-Pane Glass Options Available

STANDARD

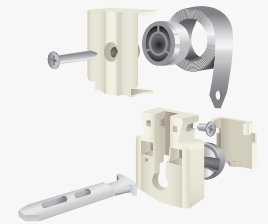
- Sunshield® Virgin Vinyl with Titanium Alloy Compound
- Main-Frame Jamb Depth Dimension of 3 1/4"
- Patented Fusion Welded Frame and Sashes
- Half Screen Standard, Full Screen is Available
- Constant Force Balance System

NFRC TEST RATINGS

MODEL	U-FACTOR	SHGC
7200 DH	.28	.26

**Ratings supplied with DS CS 36/Duralite®/Argon/Grids

Constant Force Balance System



Available Colors

