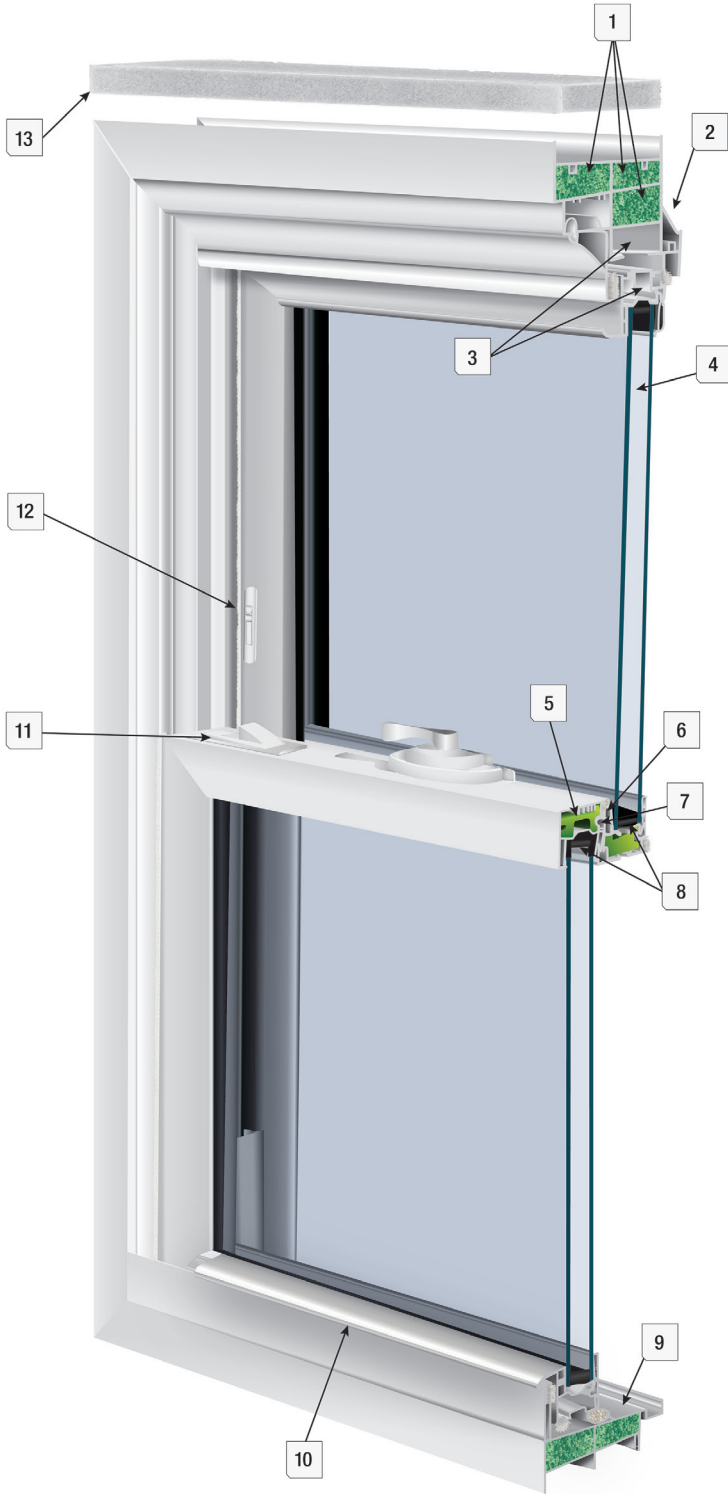


2700 SERIES

Replacement Double Hung

DOUBLE HUNG | HORIZONTAL SLIDER
FIXED PICTURE | SPECIALTY SHAPES

The 2700 Series combines uncompromised technology and quality with craftsmanship to create a window that maintains efficiency and beauty for many years.



FEATURES

- 1 Foam-Filled Frame Available
- 2 Beveled Exterior Main-Frame
- 3 Multi-Chambered Sashes and Main-Frame
- 4 7/8" Insulated Double Strength Glass Unit
- 5 Reinforced Innergy™ Rigid Thermal Interlock System Available
- 6 Multi-Point Double Barrier-Fin Weather Stripping System Along Sashes and Main-Frame
- 7 Fully Extruded Interlock at Sash Locking Rail
- 8 Quanex Building Products Most Advanced Warm Edge Spacer Duralite®
- 9 Sloped Sill Design
- 10 Fully Extruded Lift Rail
- 11 E-Z Tilt™ Sash Design with Routed Flush Mount Dual Tilt Latches
- 12 Twin Vent Stops
- 13 Insulated Foam Wrap
- 14 Triple-Pane Glass Options Available

STANDARD

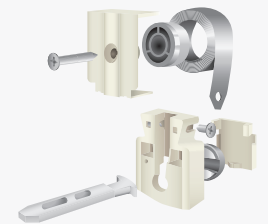
- Sunshield® Virgin Vinyl with Titanium Alloy Compound
- Main-Frame Jamb Depth Dimension of 3¼"
- Full Screen Standard, Half Screen is Available
- Head and Sill Expanders
- Patented Fusion Welded Frame and Sashes
- Constant Force Balance System

NFRC TEST RATINGS

MODEL	U-FACTOR	SHGC
2700 DH	.28	.25

**Ratings supplied with DS CS 36/Duralite®/Argon/Grids

Constant Force Balance System



Available Colors

