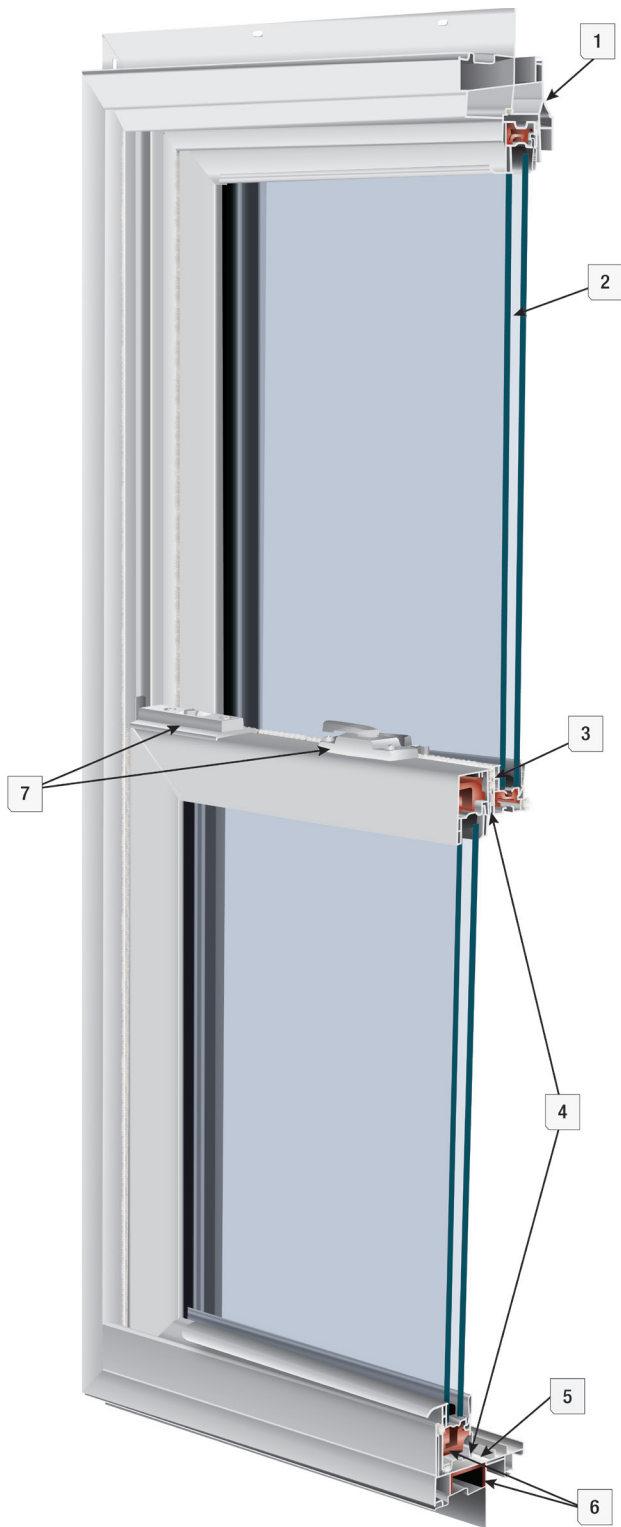


IMPACT 6000 SERIES

SINGLE HUNG | DOUBLE HUNG
FIXED PICTURE | SLIDER

High impact protection. High impact style. Engineered to perform to some of the toughest weather-related standards, providing safety, strength, and peace of mind...anywhere you call home.



FEATURES

- 1 3¼" Beveled Exterior Main-Frame Includes Integral Nailing Flange and Masonry Clip Receiver for Installation Flexibility
- 2 Saflex® Laminated Glass with a PVB Thickness of .090 Ensures 24-Hour Protection from Storms, and Greatly Reduces Sound Transmission
- 3 Patented Sash to Frame Interlock to Help Keep Sashes Secure in High Wind Conditions
- 4 Multi-Point Weather Seal System
- 5 Sloped Sill Configurations for Multiple Architectural Applications
- 6 Impact Resistant Fully Reinforced Sashes and Main-Frame
- 7 High Performance Structural Design with Industrial Strength Hardware to Help Provide Superior Break-In Resistance Over Standard Windows
- 8 Engineered to Meet Coastal Building Code Requirements up to and Including the Specifications of a E 1886/1996, Window Zone 4
- 9 Quanex Building Products Most Advanced Warm Edge Spacer Duralite®

STANDARD

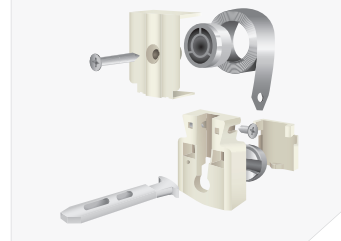
- Sunshield® Virgin Vinyl
- Patented Fusion Welded Frame and Sashes
- Constant Force Balance System
- Laminated Glass Energy Star Rated Glass Packages Available

NFRC TEST RATINGS

MODEL	U-FACTOR	SHGC
6000 PW	.32	.22
6000 SH	.34	.21
6000 DH	.35	.20
6000 SS	.33	.21

**Ratings supplied with Lami CS 28/Duralite®/Argon/Grids

Constant Force Balance System



Window	Max Size	Min Size
Single Hung	48 w" x 72h"	23 ¼w" x 22h"
Double Hung	48w" x 72h"	23 ¼w" x 22h"
Picture Window	50w" x 63h"	12w" x 12h"
Single Slider	73w" x 62h"	22w" x 23 ¼h"

Available Colors

