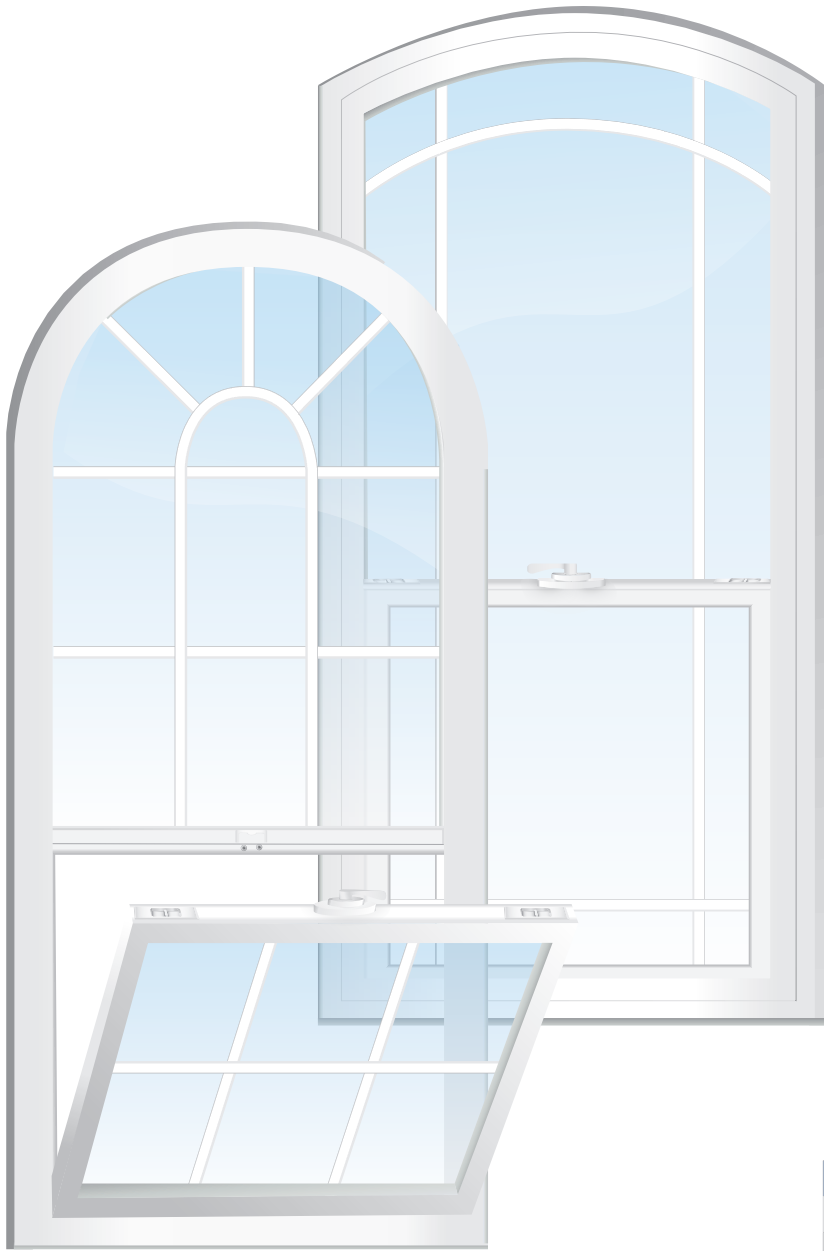


Operational Shapes

SINGLE HUNG | SPECIALTY SHAPES

The 7100 Series Operational Arched Top windows create a dramatic effect in any style home.



FEATURES

- 1 Quanex Building Products Most Advanced Warm Edge Spacer Duralite®
- 2 Multi-Chambered Sash and Main-Frame
- 3 Multi-Point Double Barrier-Fin Weather Stripping System Along Sash and Main-Frame
- 4 Sloped Sill Design
- 5 Extruded Nail Fin (removable for replacement applications)
- 6 3/4" Insulated Double Strength Glass Unit
- 7 E-Z Tilt™ Sash Design with Routed Flush Mount Dual Tilt Latches
- 8 Reinforced Innergy™ Rigid Thermal Interlock System Standard
- 9 Half Screens Standard
- 10 Beveled Exterior Main-Frame
- 11 Fully Extruded Interlock at Sash Locking Rail
- 12 Fully Extruded Lift Rail
- 13 Fully Extruded Recessed J-Channel
- 14 Foam-Filled Frame Available

STANDARD

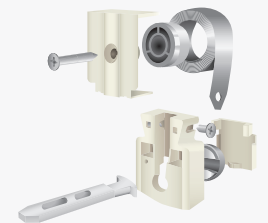
- Sunshield® Virgin Vinyl
- Main-Frame Jamb Depth Dimension of 3 1/4"
- Patented Fusion Welded Frame and Sash
- Constant Force Balance System

NFRC TEST RATINGS

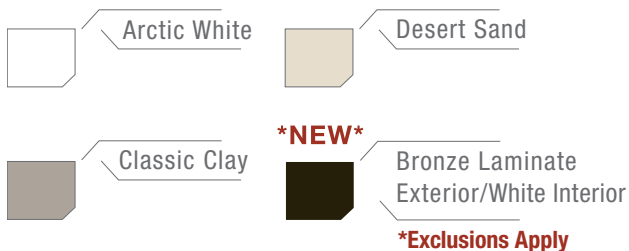
MODEL	U-FACTOR	SHGC
7100 SH	.27	.26

**Ratings supplied with DS 36/Duralite®/Argon/Grids

Constant Force Balance System



Available Colors



***Exclusions Apply**

